

专业 专注 精益 求精  
PROFESSION,DEVOTION,KEEP IMPROVING

**Dongguan Headquater**  
No.3,Lianwei Industrial Road,  
Dalingshan Town,Dongguan City,  
Guangdong Province  
(86)769 8188 2709

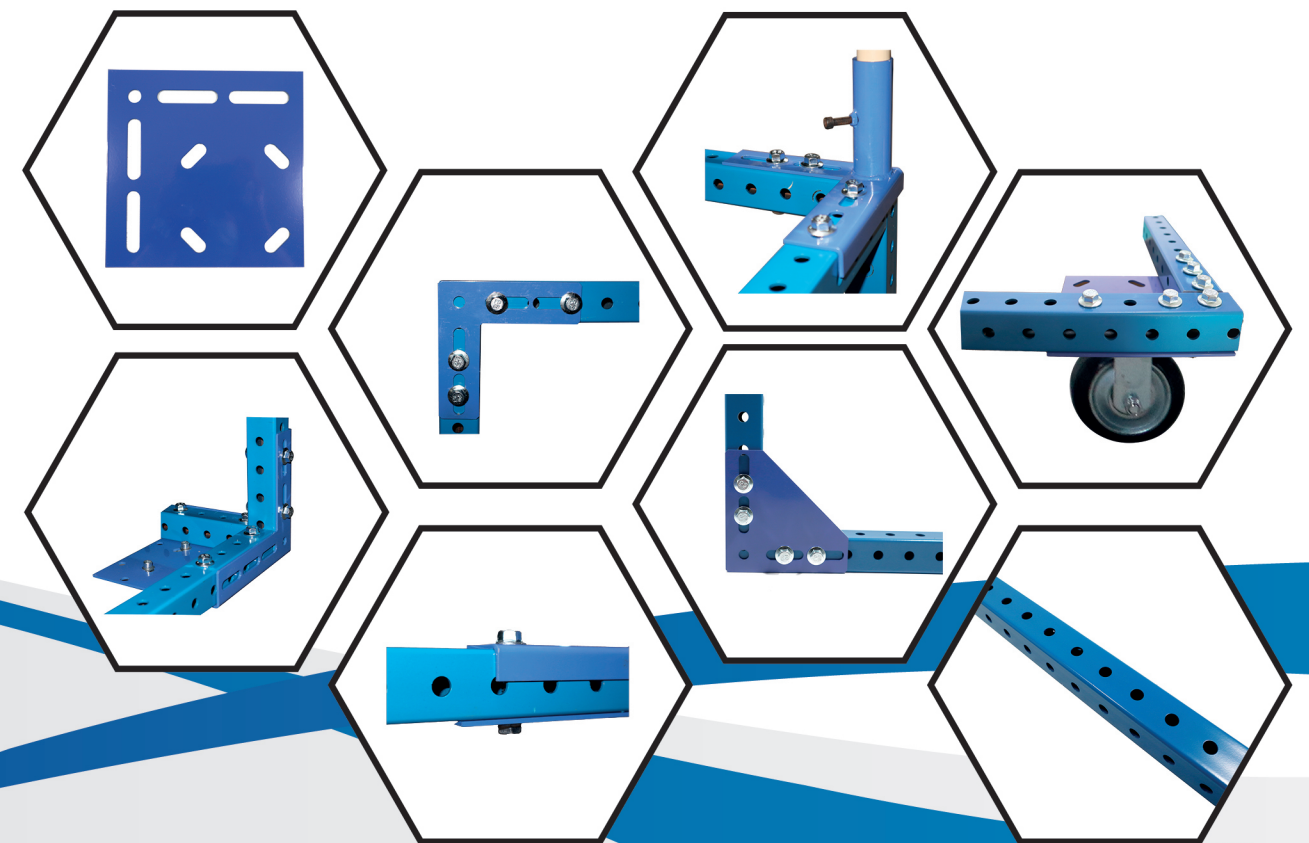
**Shenzhen Branch**  
Room 503,Xinghe Yayuan,  
Songming Avenue,Songgang Town,  
Bao'an District,Shenzhen  
(86)755 3394 0262

**E-MAIL:**  
info@wj-lean.com

www.wj-lean.com  
www.lean-industech.com



## HEAVY SQUARE TUBE SYSTEMS 重型方管系统



**WJ-LEAN TECHNOLOGY COMPANY LIMITED**  
唯杰自动化设备科技（东莞市）有限公司

## Company Profile

WJ-lean Systems has created its own square tube system for structures that require high load capacity and movement between different production plants.

### **Our Square System is characterized by:**

Modulable system: with our accessories and joints we can make any type of structure, with different shapes and dimensions. Our square tube has a different holes and collises that allow us to place in different positions our accessories.

### **SAFETY INNOVATION COST REDUCTION**

The STS System fills the need for increased durability and rigidity over pipe and connectors. This product offers the opportunity for a completely modular system to create custom structures. Enabling the integration of pipe and connector systems, Square Tube creates a structure with adurable, towable base and a light top end for east maneuvering.

Easy to assembly: with our accessories will be very easy to do all constructions.

No welding: our Square System does not require any kind of welding.

Reusable: the system can be reused to create new structures.

### **TECHNICAL FEATURE**

Square tube 40 mm \* 40 mm. 3 mm of thickness.

Accessories: 3 mm of thickness. Wheel adaptable accessories.

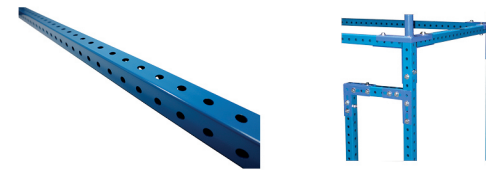
Perforated tube with intersped holes. M10 screws for accessories.

M8 screws for wheels.

## Square tubes- 4040 System



**WJ-SQ4040-000**



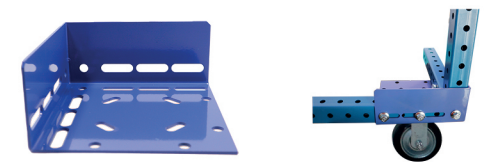
**WJ-SQ4040-001**



**WJ-SQ4040-002**



**WJ-SQ4040-003**



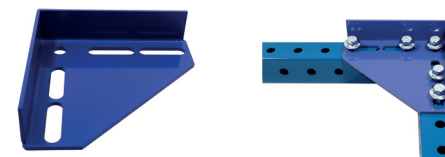
**WJ-SQ4040-004**



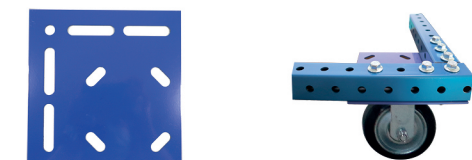
**WJ-SQ4040-005**



**WJ-SQ4040-006**



**WJ-SQ4040-007**





**WJ-SQ4040-008**



**WJ-SQ4040-009**



**CAP-4040-BK**



**HTBF-M10\*50**



Hexagon Tapite Screw and Flange nut For tubes

**EB-M10\*100**



Expansion bolt For stand

**HTBN-M8\*35**



Hexagon Tapite Screw and Nut For wheels

## Square tubes-4545 System





## SQ4545



### Black steel square tube

#### Description:

Black square tube, 45\*45mm, 3mm thickness, 4000mm length

#### How to Use:

To connect 2 reinforced bases. Usable in environments sensitive to electrostatic discharges.

## SQ45-D1



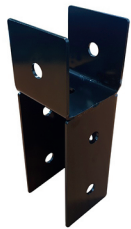
### 90 degree connector float

#### Description:

Material: Steel

Surface: Black power coating

## SQ45-D2



### 90 Degree Connector Float-Open Ends

#### Description:

Material: Steel

Surface: Black power coating

## SQ45-AC



### Three Way Flush Cross Connector Float

#### Description:

Material: Steel

Surface: Black power coating

## SQ45-B



### Two Way Cross Connector Float

#### Description:

Material: Steel

Surface: Black power coating

## SQ45-G1



### Black X reinforced base SQ4545 Junction

#### Description:

Black steel 90X reinforced base, 140\*140mm, 100mm height.

#### How to Use:

To link two square tubes without any discontinuity with a 90° angle.

To be used with SQ4545 square tubes.

## SQ45-G2



### Intersection Connector-Open 50\*100L

#### Description:

Material: Steel

Surface: Black power coating

## SQ45-K



### 90 degree Curve Connector

#### Description:

Material: Steel

Surface: Black power coating

## SQ45-J



### 45 Degree Connector Float-Open Ends

#### Description:

Material: Steel

Surface: Black power coating

## SQ45-P



### Right angle reinforced base

#### Description:

Black steel reinforced base, 3mm thickness, 135\*130mm

#### How to Use:

To make a structural angle. Can be used with SQ4545 square tubes.

Usable in environments sensitive to electrostatic discharges.

## SQ45-PI



### T-shaped central reinforced base

#### Description:

Black steel reinforced T base, 3mm thickness, 135\*130mm

#### How to Use:

To fix intermediate castors on a structure with SQ4545 square tubes.

Usable in environments sensitive to electrostatic discharges.

## SQ45-PIT



### T-shaped central reinforced base and tube

#### Description:

Black steel reinforced T base with vertical tube, 3mm thickness, 135\*130mm

#### How to Use:

To fix intermediate castors on a structure and make a connection with SQ4545 square tubes. Usable in environments sensitive to electrostatic discharges.

## SQ45-PD



### Black angle joint for square tube and decentered round tube

#### Description:

Black steel joint between reinforced base and standard round tube with 90° angle.

#### How to Use:

To fix standard round tube with SQ-4545 square tube. Can be used with SQ-PIT reinforced base.

## SQ45-TRD



### Black right angle reinforced base with vertical square tube

#### Description:

Black steel reinforced base, 3mm thickness, 190\*190 mm

#### How to Use:

To make a structural angle. To be used with SQ4545 square tubes.

## SQ45-TRX



### Black central T base reinforced with vertical square tube

#### Description:

Black steel reinforced central T base with vertical square tube, 3mm thickness, 134\*130mm.

#### How to Use:

To fix intermediate castors on a structure and make a connection with a square vertical tube. To be used with SQ4545 square tubes.

## SQ45-PAB



### Black steel joint between reinforced base and two aligned standard round tubes

#### Description:

Black angle joint for square tube with centered and two aligned round tubes, square tube length 134mm, round tubes length 50mm.

#### How to Use:

To fix two aligned standard round tubes with SQ4545 square tube.

## SQ45-PAC



**Black steel joint between reinforced base and two standard round tubes with 90° angle**

**Description:**

Black angle joint for square tube with centered and two round tubes with 90° angle, square tube length 134mm, round tubes length 50mm.

**How to Use:**

To fix two standard round tubes at 90° angle with SQ4545 square tube.

## SQ45-P4A



**Black steel joint between reinforced base and four standard round tubes with 90° angle**

**Description:**

Black angle joint for square tube with centered and four round tubes with 90° angle, square tube length 134mm, round tubes length 50mm.

**How to Use:**

To fix four standard round tubes at 90° angle with SQ4545 square tube.

## SQ45-GAF



**Black Ground attachment foot**

**Description:**

Black steel ground attachment foot, 110\*110mm, 138mm height, 10mm drilling diameter.

**How to Use:**

Fix a tubular structure in the ground. To be used with SQ4545 square tubes.

## SQ45-TRC



**Black central reinforced base with vertical square tube**

**Description:**

Black steel central reinforced base with vertical square tube, 3mm thickness, 190\*134mm, 123mm height.

**How to Use:**

To fix intermediate castors at the center of a structure and make a connection with a square vertical tube. To be used with SQ4545 square tubes.

## SQ45-CF1



**Square Tube Pipe Connector Float(28MM)**

**Description:**

Material: Steel

Surface: Black power coating

## SQ45-CF2



**Square Tube Pipe Connector Float-OPEN(28MM)**

**Description:**

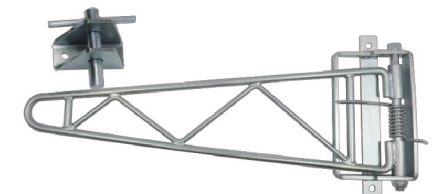
Material: Steel

Surface: Black power coating

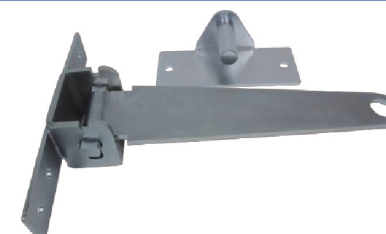
## WA-1005A



## WA-1005B



## WA-1005C



## WA-1005D





## Application

